



**ARIZONA
STONE**
& ARCHITECTURAL PRODUCTS LLC

AMY PREVOST
480-641-1042 • Cell 480-353-8792 • Fax 480-641-1066
amy@arizonastone.biz • arizonastone.com

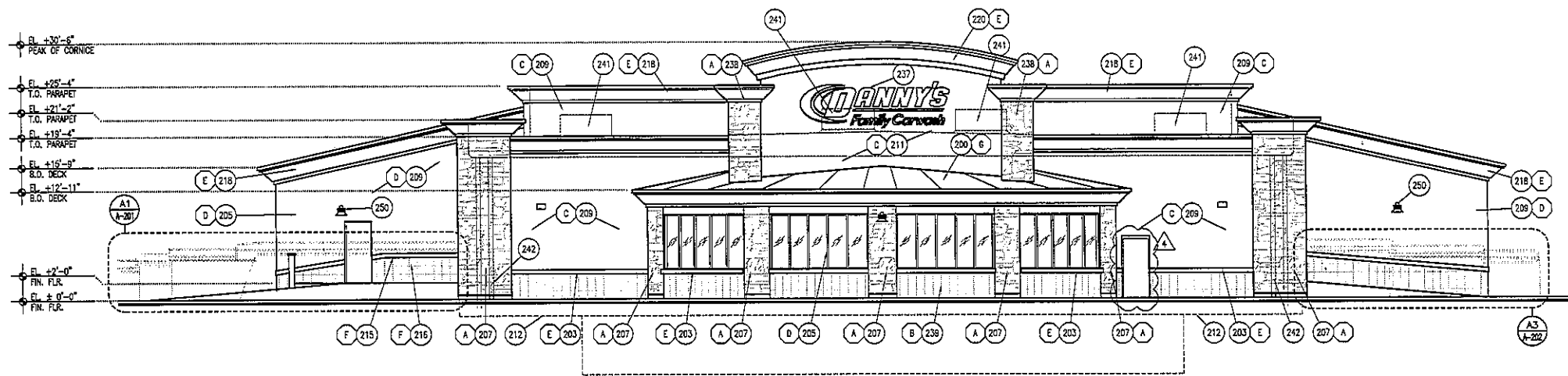
MESA PHOENIX PRESCOTT CENTRAL COAST, CA



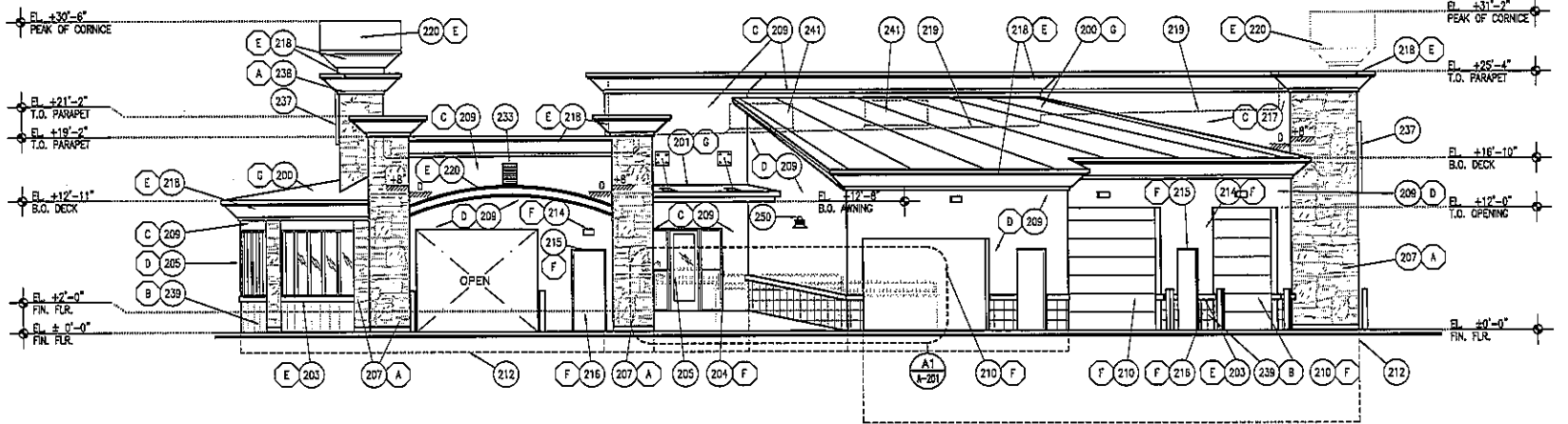
**ARIZONA
STONE**
& ARCHITECTURAL PRODUCTS LLC

2630 W. Deer Valley Rd. Phoenix, AZ 85027
4502 E. Virginia St. #102 Mesa, AZ 85215

JEFF HERBERGER
480-641-1042 • Cell 480-353-8791 • Fax 480-641-1066
jeff@arizonastone.biz • arizonastone.net



B1 NORTH ELEVATION
1/8" = 1'-0"



A1 WEST ELEVATION
1/8" = 1'-0"

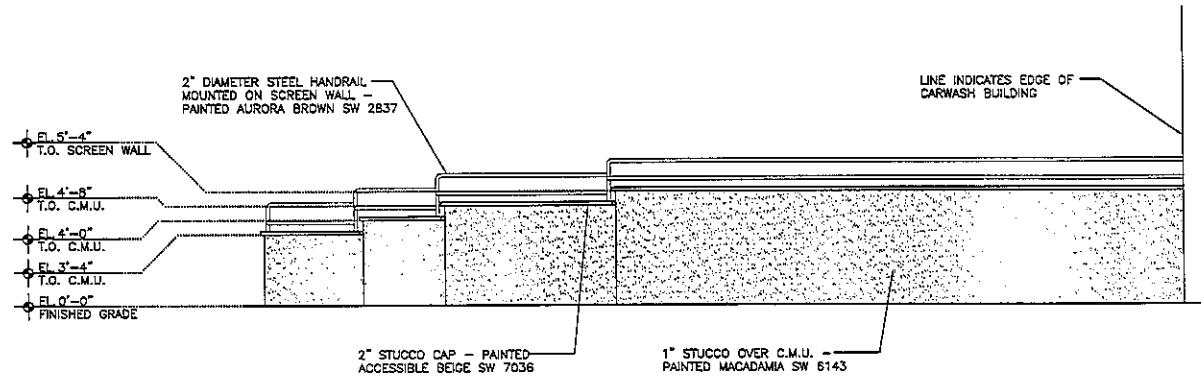
- ### KEYNOTES
200. STANDING SEAM METAL ROOF OVER 1/2" PLYWOOD SHEATHING
 201. METAL AWNING - REFER TO DETAIL A1/A-504
 203. E.I.F.S. OVER FOAM ACCENT BAND, PAINTED TO BE TINTED
 204. ALUMINUM STOREFRONT FRAME, PAINTED - GLAZING TO BE TINTED
 205. BRONZE ANODIZED STOREFRONT GLAZING
 207. CULTURED STONE VENEER MOUNTED ON C.M.U.
 209. STUCCO FINISH OVER C.M.U. WALL, PAINTED - REFER TO EXTERIOR COLOR SCHEDULE
 210. OVERHEAD ROLL DOWN DOOR, PAINT TO MATCH WALL
 211. 1" STUCCO OVER METAL STUD WALL, PAINTED
 212. CONCRETE FOOTING - REFER TO STRUCTURAL DRAWINGS
 214. WALL MOUNTED LIGHT FIXTURE - REFER TO ELECTRICAL DRAWINGS
 215. HOLLOW METAL FRAME, FULLY GROUTED @ C.M.U. WALLS - REFER TO COLOR SCHEDULE FOR COLOR
 216. METAL DOORS & FRAMES, PAINTED - REFER TO ELEVATIONS
 217. STUCCO OVER METAL STUD FRAMING
 218. E.I.F.S./FOAM PARAPET, PAINTED - REFER TO DETAIL B1/A-110
 219. LINE OF ROOF BEYOND
 220. E.I.F.S. CORNICE - REFER TO DETAIL B1/A-110
 223. 1"-6"x2'-0" LOUVE - FOR VENTILATING THE SPACE BETWEEN THE ROOF AND CEILING WITHIN THE CARWASH TUNNEL
 235. 8"x8"x15" SMOOTHFACE C.M.U. - REFER TO COLOR SCHEDULE FOR COLOR
 237. BUILDING SIGNAGE - UNDER SEPARATE PERMIT
 238. CULTURED STONE MOUNTED ON STEEL FRAMING
 239. SLATE TILE MOUNTED ON CMU
 240. 2" DIAMETER STEEL HANDRAIL MOUNTED ON SCREENWALL
 241. MECHANICAL UNITS BEYOND - SCREENED BY PARAPET
 242. ROOF DRAIN AND OVER FLOW DRAIN
 250. DECORATIVE WALL MOUNTED FIXTURE - FC FIXTURE FDW-1100

- ### EXTERIOR COLOR SCHEDULE
- SANDSTONE VENEER**
- (A) CULTURED STONE VENEER - 80% SLICKS COUNTY SOUTHERN LEDGESTONE - 20% SUGARS-COUNTY DRESSED FIELDSTONE
 - (B) SLATE TILE - IMC NATURAL STONE AZTEC GOLD 1410G
- EXTERIOR FINISH - SENERGY TO MATCH**
- (C) ROYCROFT SUEDE - SW 2842
 - (D) MACADAMIA - SW 6143
 - (E) ACCESSIBLE BEIGE - SW 7036
- MISCELLANEOUS METALS, AWNINGS, DOORS, & FRAMES**
- (F) AURORA BROWN - SW 2837
 - (G) ATAS - ROCKY GREY

Typ. for all Bldgs & Canopies, & Site Walls

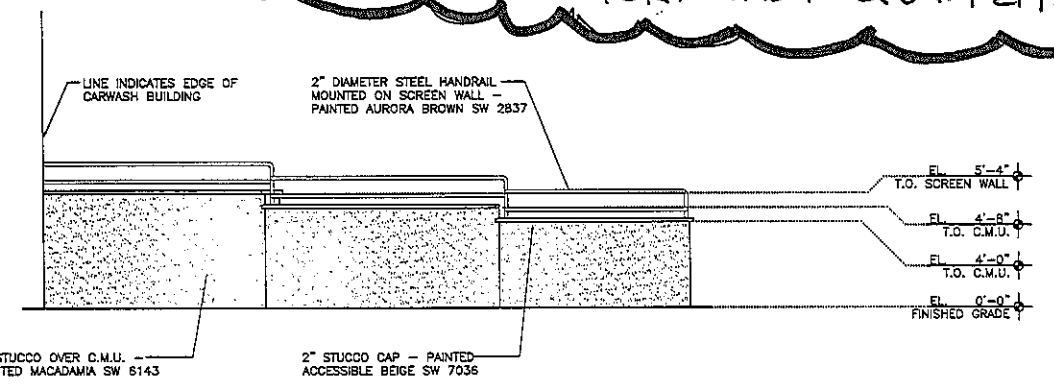
Revised AS APPROVED BY VESTAR 10/9/06

CORONADO MFR. STONE
- 80% EASTERN MOUNTAIN LEDGE COLOR! GREY QUARTZITE
- 20% MINNESOTA FIELDSTONE COLOR! GREY QUARTZITE



A1 SLOPED WALK WAY SCREEN WALL

SCALE: 1/4" = 1'-0"



A3 SLOPED WALK WAY SCREEN WALL

SCALE: 1/4" = 1'-0"



Deutsch Associates
4800 E. Indian School Rd.
Phoenix, AZ 85018
602/940-2928
602/940-4444 Fax
www.2928.com



CONSULTANTS

DANNY'S FAMILY CARWASH
4027 S. GILBERT ROAD
GILBERT, ARIZONA

04-11-06	DEVELOPER COMMENTS
04-05-06	CITY COMMENTS TO REV. 4 & 5 OWNER CHANGES
04-04-06	OWNER PROTOTYPE REVISIONS
01-03-06	3rd CITY SUBMITTAL
10-27-05	2nd CITY SUBMITTAL
7-27-05	1st CITY SUBMITTAL

PROJECT NO: 04186-00
CAD DWG FILE: -
DRAWN BY: BYM
CHK'D BY: ED WIMMER
COPYRIGHT: DEUTSCH ASSOCIATES

SHEET TITLE
EXTERIOR ELEVATIONS

A-202

CROSSROADS TOWNCENTER - DANNY'S FAMILY CAR WASH (#04186-00) - DR 04-91, PDR-2004-00091, BLD-2005-06914/BLD-2005-07807, PRICE CHECK SET 04-17-06
N:\04186-00\4.CONDO\186-A-201.dwg, 10/9/2006, 12:10:04 PM, Jmarin